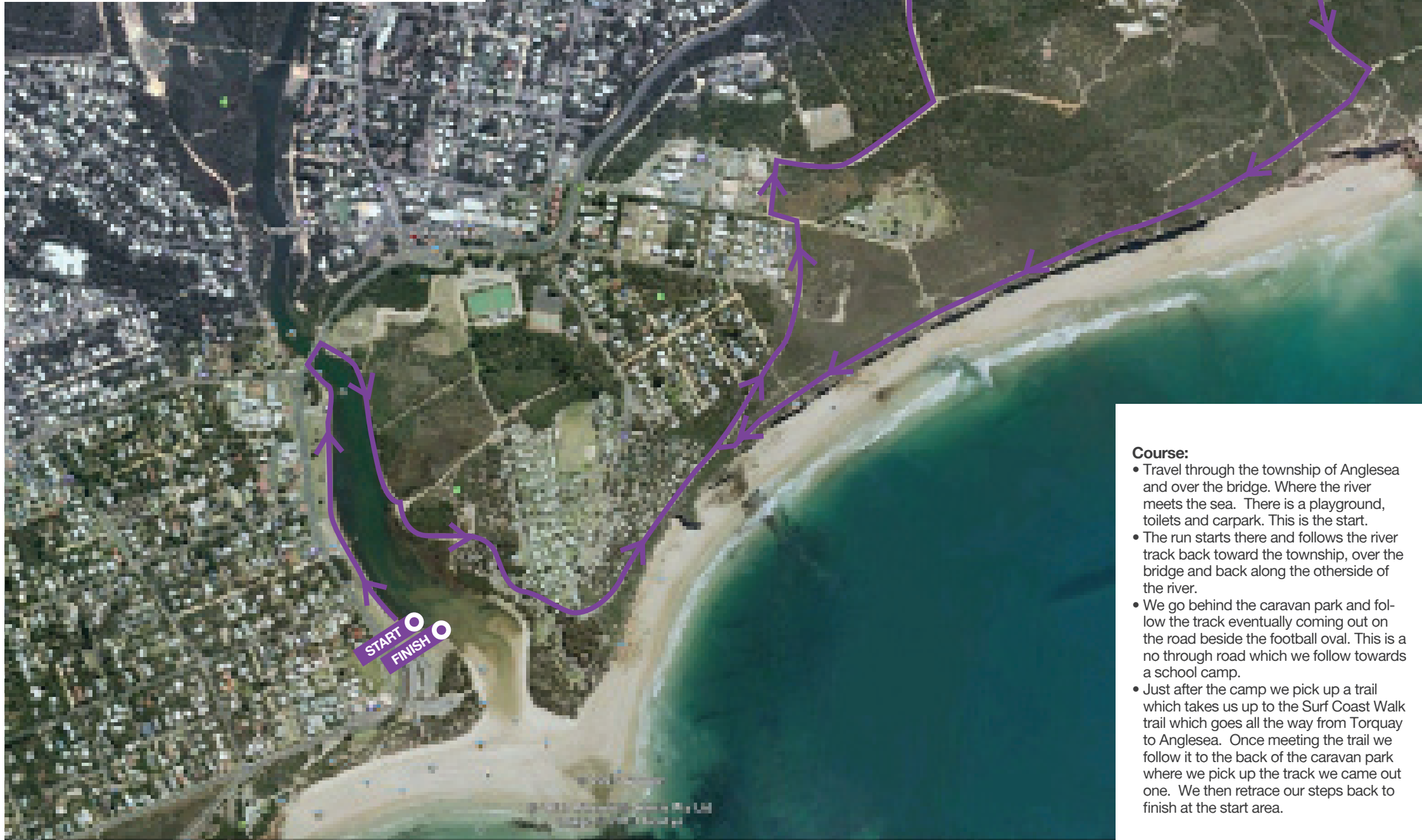


ANGLESEA

run by the **GEELONG** CROSS COUNTRY CLUB



Course:

- Travel through the township of Anglesea and over the bridge. Where the river meets the sea. There is a playground, toilets and carpark. This is the start.
- The run starts there and follows the river track back toward the township, over the bridge and back along the otherside of the river.
- We go behind the caravan park and follow the track eventually coming out on the road beside the football oval. This is a no through road which we follow towards a school camp.
- Just after the camp we pick up a trail which takes us up to the Surf Coast Walk trail which goes all the way from Torquay to Anglesea. Once meeting the trail we follow it to the back of the caravan park where we pick up the track we came out one. We then retrace our steps back to finish at the start area.